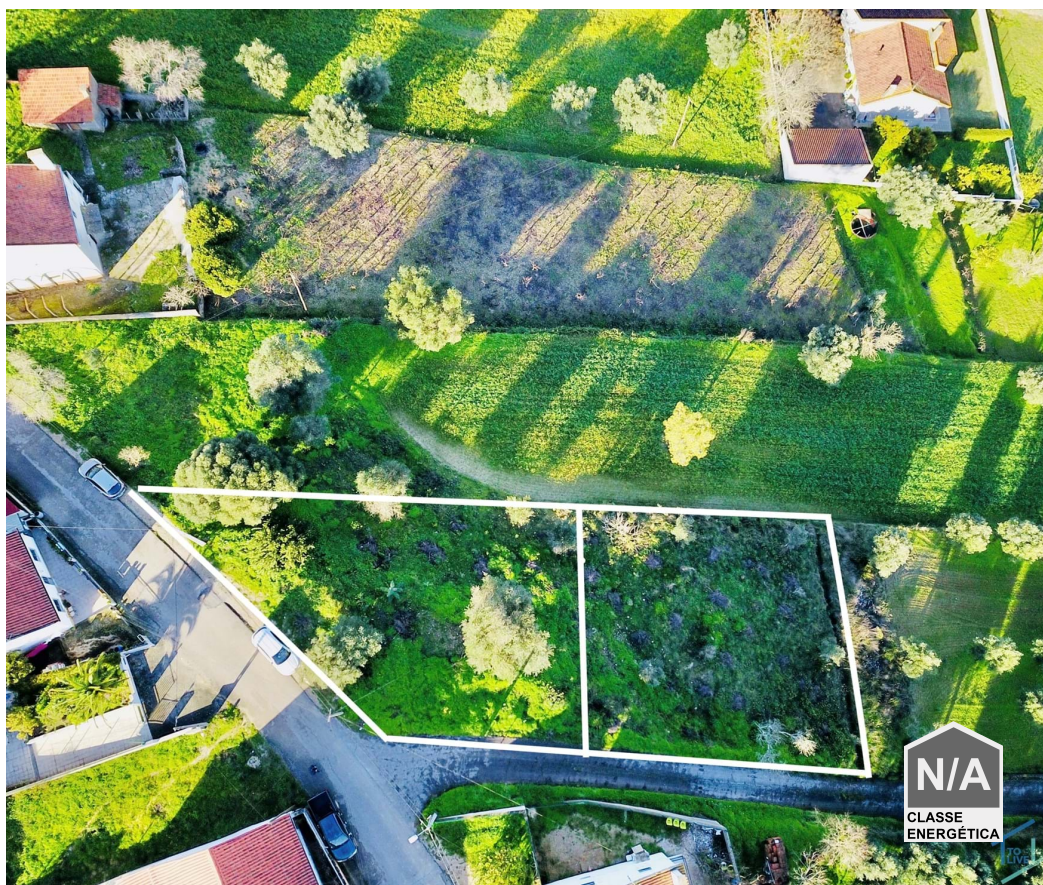




## Carregueiros - Land



 1070

Land Area (m<sup>2</sup>)

**35 000 €**

(EUR €)

**2 Plots of land for urban construction 7 minutes from the city of Tomar**

## 2 Plots of land for urban construction 7 minutes from the city of Tomar

I am pleased to present you two exceptional plots of land, located in a quiet village, which offers a perfect combination of rural living and convenient access to modern services. With a generous area of 1070 m<sup>2</sup> each, these plots for urban construction are strategically positioned next to the IC9 road and just 7 minutes from the vibrant city of Tomar.



**Jose Ferreira**

+351 910340340 <sup>2</sup>

jose.ferreira@vivernocentrodeportugal.com

T +351 249 157 630 <sup>1</sup> · T +351 916 356 181 <sup>2</sup> · E geral@tolive.pt

Av. Combatentes da Grande Guerra, 13A  
AMI 24759

<sup>1</sup> (Call to national fixed network) | <sup>2</sup> (Call to national mobile network)



VCP181

Reference

Scan the QR code to view the property



Situated in an urban setting, these plots feature a good construction rate, allowing you to explore the full creative potential for your new home. With the possibility of building on up to 3 floors, the plot offers an impressive total construction area of 300 m<sup>2</sup>. Each plot will have an implantation of approximately 150 m<sup>2</sup>, which provides ample scope for the realization of your desires and architectural visions.

Imagine your dream home coming to life on these spacious and well-located plots. The proximity to the city of Tomar offers the convenience of being close to a variety of services, while the tranquil atmosphere of the village provides a relaxing getaway for you and your family.

Don't miss the opportunity to transform these lots into a home that truly reflects your style and personality. Schedule a visit today and start planning your family's future in this idyllic setting. Welcome to the realization of your dreams.

## Property Features

- Garden
- Terreno
- Proximity: Mountain, Restaurants, City, Hospital, Pharmacy, Public Transport, Schools
- Views: Countryside views
- Energetic certification: Exempt
- Espaços Verdes
- Fruit Trees
- Ampla Oferta de Serviços
- Mains water



**Jose Ferreira**

+351 910340340 <sup>2</sup>

jose.ferreira@vivernocentrodeportugal.com

**T +351 249 157 630 <sup>1</sup> · T +351 916 356 181 <sup>2</sup> · E geral@tolive.pt**

**Av. Combatentes da Grande Guerra, 13A  
AMI 24759**

<sup>1</sup> (Call to national fixed network) | <sup>2</sup> (Call to national mobile network)