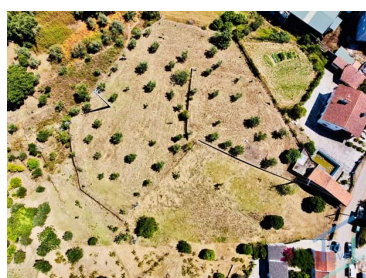




## Serra e Junceira - Rural land



5800

Land Area (m²)

80 000 €

(EUR €)

## Rustic Land of 5,800 m² – Construction Opportunity in a Charming Location!

## Rustic Land of 5,800 m² – Construction Opportunity in a Charming Location!

If you're looking for the perfect place to build your dream villa, you've just found it! This **rustic plot of 5,800 m²**, located in a charming village in the parish of **Serra de Tomar**, offers the ideal setting to live surrounded by tranquility and nature, without giving up comfort.

With the **possibility of building a house**, this land has **access to water and electricity from the**


**Jose Ferreira**

+351 910340340 <sup>2</sup>

jose.ferreira@vivernocentrodeportugal.com

T +351 249 157 630 <sup>1</sup> · T +351 916 356 181 <sup>2</sup> · E geral@tolive.pt

Av. Combatentes da Grande Guerra, 13A  
AMI 24759

<sup>1</sup> (Call to national fixed network) | <sup>2</sup> (Call to national mobile network)



VCP346

Reference

Scan the QR code to view the property



**public network**, as well as **fiber optics**, ensuring a stable internet connection. Located close to **river beaches** and **essential services**, it provides the perfect balance between the quiet of the countryside and the proximity of facilities.

### Prime Location:

- Just **5 minutes** from the village of Serra;
- **10 minutes** from the city of Tomar;
- With views and landscapes that bring the peace of mind you seek.

This is the **lovely place** you have always dreamed of to build your home and enjoy a more serene and natural life. **Book your visit now** with **Viver no Centro de Portugal** and start the journey to turn your dreams into reality!

## Property Features

- Terreno
- Proximity: Mountain
- Ampla Oferta de Serviços
- Quiet Location
- Fruit Trees
- Praia Fluviais
- Views: Countryside views
- Energetic certification: Exempt



**Jose Ferreira**

+351 910340340 <sup>2</sup>

jose.ferreira@vivernocentrodeportugal.com

T +351 249 157 630 <sup>1</sup> · T +351 916 356 181 <sup>2</sup> · E geral@tolive.pt

Av. Combatentes da Grande Guerra, 13A  
AMI 24759

<sup>1</sup> (Call to national fixed network) | <sup>2</sup> (Call to national mobile network)