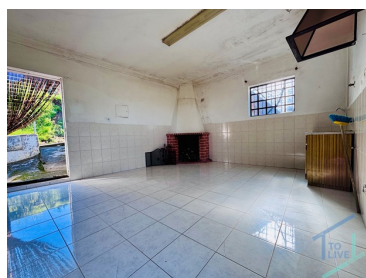
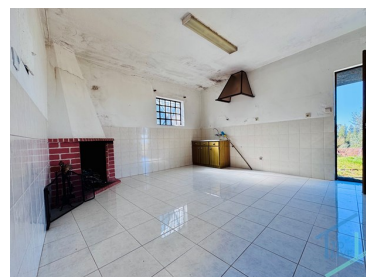




## Areias e Pias - Villa



2  
Bedrooms

1  
Bathrooms

57  
Area (m<sup>2</sup>)

1840  
Land Area (m<sup>2</sup>)

**75 000 €**  
(EUR €)

## Refuge in the Heart of Nature – Single Storey House with Land

### ▮ Refuge in the Heart of Nature – Single Storey House with Land ▮

If you are looking for tranquility, contact with nature and a great location, this single storey villa is the right choice! Situated in a quiet and welcoming village, close to Tomar and Ferreira do Zêzere, it offers the perfect balance between comfort and privacy, with quick access to the A13/A23 roads.

#### ▮ Property Features:

▮ 2 spacious bedrooms



**Jose Ferreira**

+351 910340340 <sup>2</sup>

jose.ferreira@vivernocentrodeportugal.com

T +351 249 157 630 <sup>1</sup> · T +351 916 356 181 <sup>2</sup> · E geral@tolive.pt

Av. Combatentes da Grande Guerra, 13A  
AMI 24759

<sup>1</sup> (Call to national fixed network) | <sup>2</sup> (Call to national mobile network)



VCP438

Reference

Scan the QR code to view the property



- ▮ Cozy room
- ▮ Traditional kitchen with fireplace + modern kitchen
- ▮ Refurbished bathroom with shower
- ▮ Terraced fenced land, with several fruit trees
- ▮ Own water hole
- ▮ Terrace with panoramic views of the mountains
- ▮ Essential infrastructure: water, electricity and fiber optics of the public network

▮ **Highlights:**

- ▮ A few minutes from the magnificent river beaches of Albufeira de Castelo de Bode
- ▮ Good access, with the A13/A23 close by
- ▮ Incredible potential for residency or investment

▮ **Note:** The property is sold without a license for use, and is not eligible for bank financing.

▮ **Take advantage of this opportunity!** Contact **Viver no Centro de Portugal** and book your visit now. Your future starts here!

▮ **Schedule your visit now!**

## Property Features

- Fireplace
- Shower
- Espaços Verdes
- Fruit Trees
- Praia Fluviais
- Views: Countryside views, Mountain views, Garden view
- Drive way
- Terrace
- Borehole
- Septic tank
- Laminated floor
- Garden
- Terreno
- Proximity: Mountain, Restaurants, City, Open field, Hospital, Schools
- Ampla Oferta de Serviços
- Quiet Location
- Optical fibre
- Mains water
- Sealed land area
- Energetic certification: F



**Jose Ferreira**

+351 910340340 <sup>2</sup>

jose.ferreira@vivernocentrodeportugal.com

T +351 249 157 630 <sup>1</sup> · T +351 916 356 181 <sup>2</sup> · E geral@tolive.pt

Av. Combatentes da Grande Guerra, 13A  
AMI 24759

<sup>1</sup> (Call to national fixed network) | <sup>2</sup> (Call to national mobile network)